



The Nevada Conservation Credit System (CCS)

Update on 2017 Wildfires in Nevada, Potential Effects on GRSB Habitat, and CCS Credit Projects

Thursday, August 3, 2017

Sagebrush Ecosystem Technical Team (SETT)
Dan Huser, NDF



2017 Wildfire Season

- The wildfire season got off to a record start:
- Fine fuels in many locations at 2-3 times average conditions.
- Acreages of wildfire from 2017 and recent years:

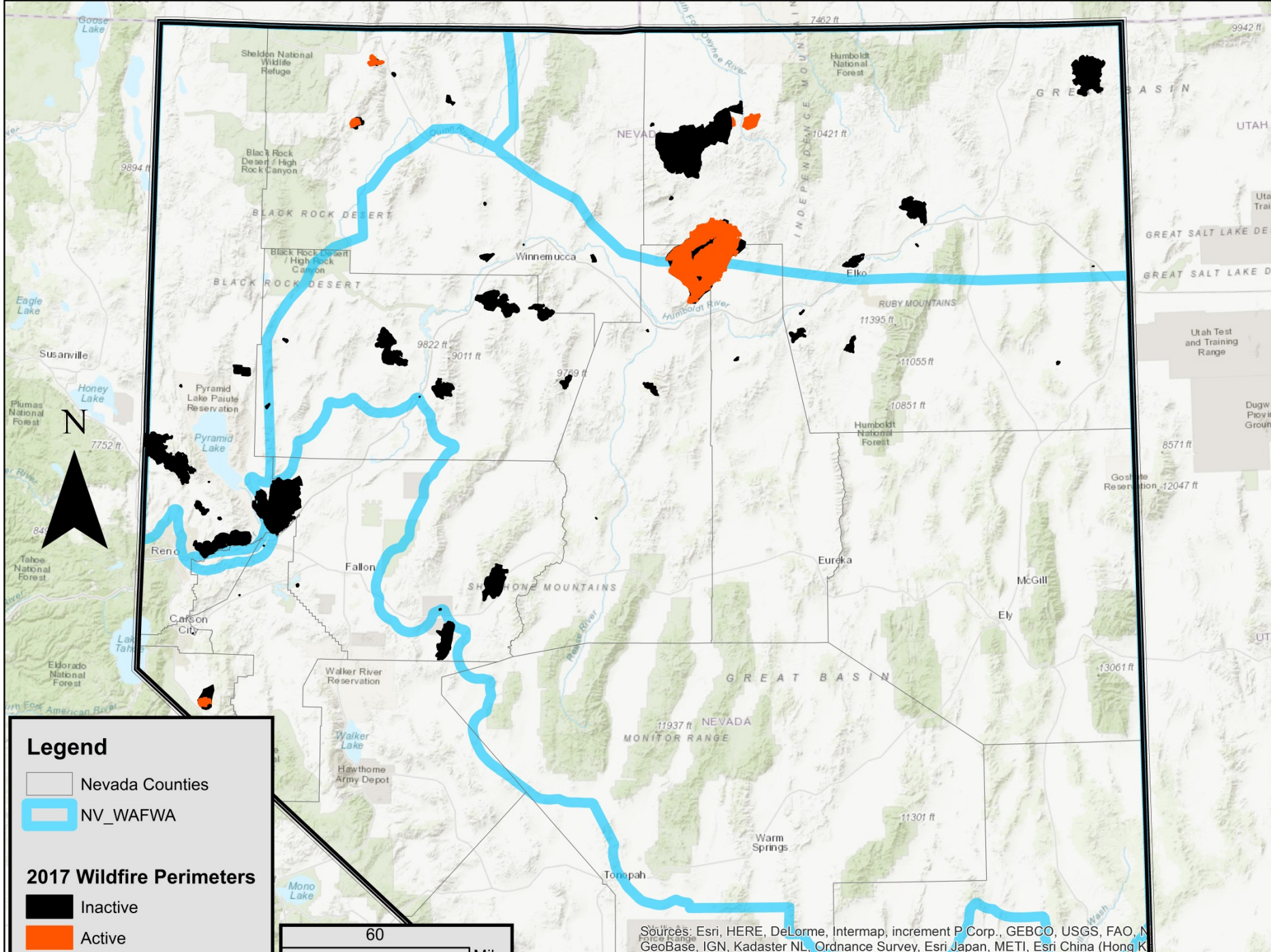
Year	Total Acres of Wildfire Reported
2017	923,188*
2016	265,156
2015	42,479
2014	63,036
2013	159,424
2012	607,798

* As of 7/31/2017.



A Quick Assessment

- With a long way to go in the season, we set out to assess:
 - Whether 2017 wildfires have impacted CCS credit projects.
 - The impacts from 2017 wildfires to GRSG habitat.

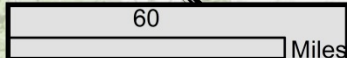


Legend

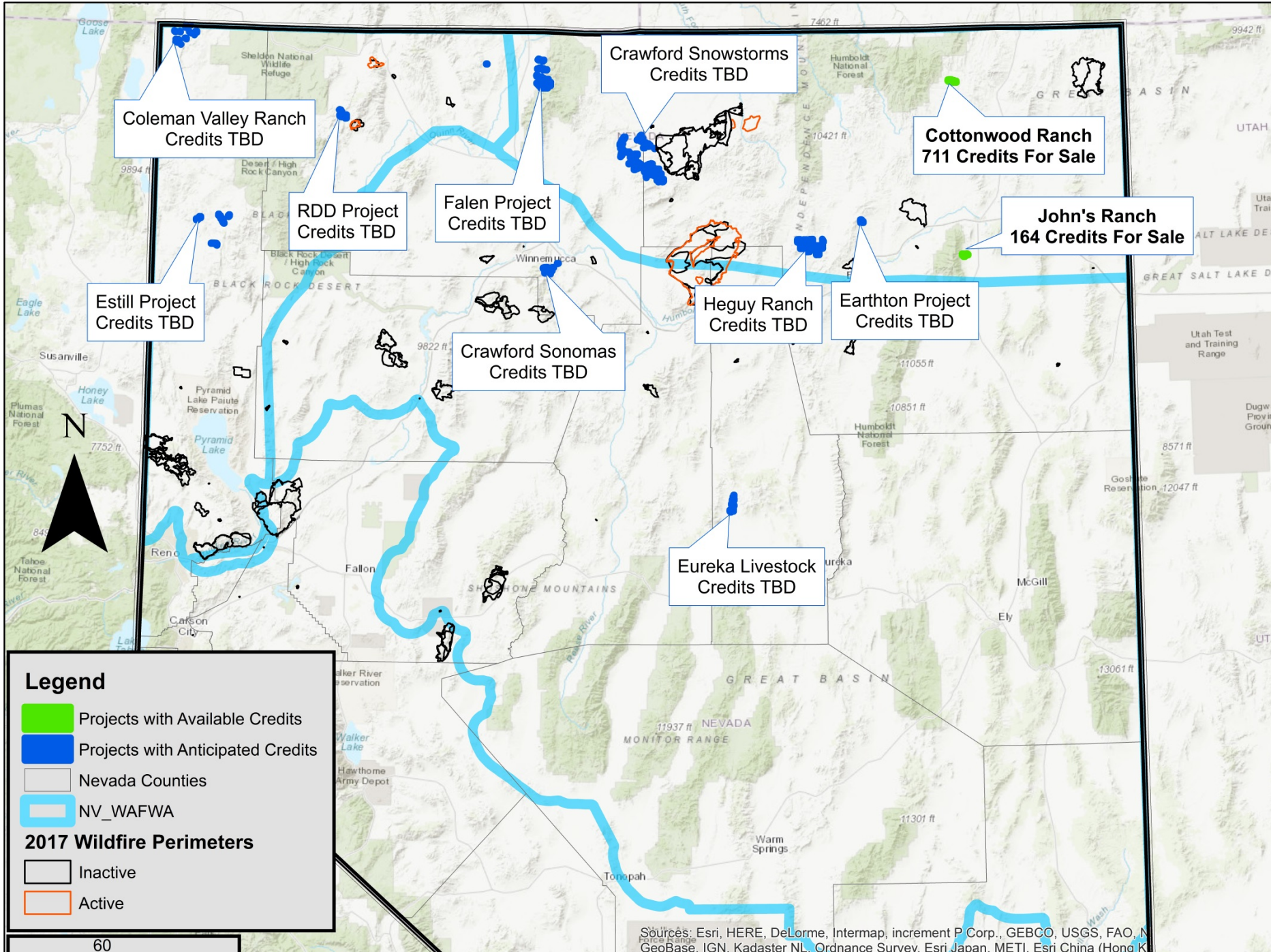
- Nevada Counties
- NV_WAFWA

2017 Wildfire Perimeters

- Inactive
- Active



Sources: Esri, HERE, DeLorme, Intermap, increment P Corp., GEBCO, USGS, FAO, NAD, GEBCO, IGN, Kadaster NL, Ordnance Survey, Esri Japan, METI, Esri China (Hong Kong), Swatch, Bing, MapmyIndia. © OpenStreetMap contributors, and the GIS User Community



Coleman Valley Ranch
Credits TBD

RDD Project
Credits TBD

Estill Project
Credits TBD

Crawford Snowstorms
Credits TBD

Falen Project
Credits TBD

Crawford Sonomas
Credits TBD

Heguy Ranch
Credits TBD

Eureka Livestock
Credits TBD

Earthton Project
Credits TBD

Cottonwood Ranch
711 Credits For Sale

John's Ranch
164 Credits For Sale

Legend

- Projects with Available Credits
- Projects with Anticipated Credits
- Nevada Counties
- NV_WAFWA

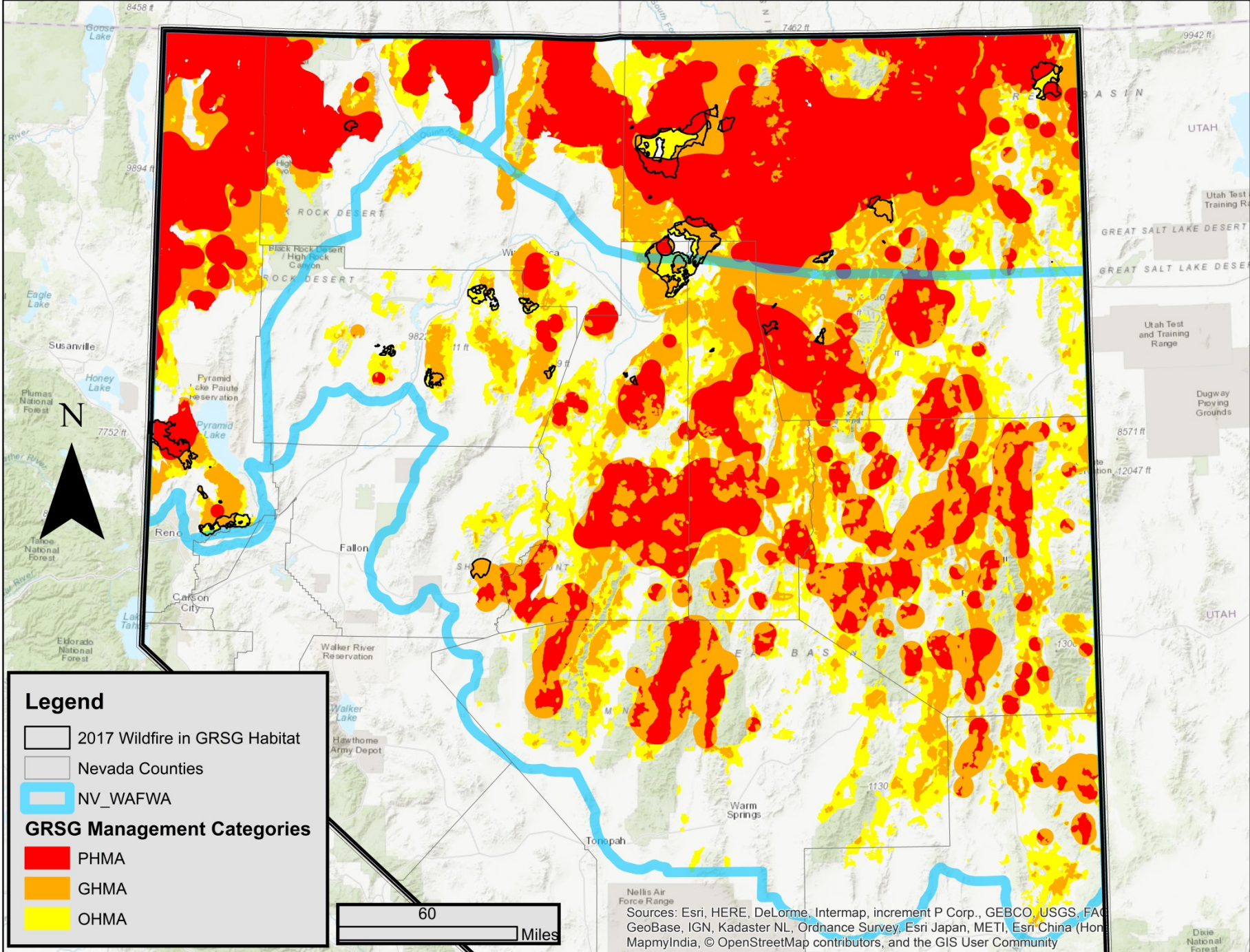
2017 Wildfire Perimeters

- Inactive
- Active

Sources: Esri, HERE, DeLorme, Intermap, increment P Corp., GEBCO, USGS, FAO, NAD, IGN, Kadaster NL, Ordnance Survey, Esri Japan, METI, Esri China (Hong Kong), Swisstopo, Mapbox India, © OpenStreetMap contributors, and the GIS User Community

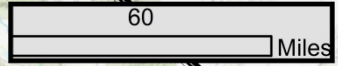
60

Miles



Legend

- 2017 Wildfire in GRS Habitat
- Nevada Counties
- NV_WAFWA
- GRSG Management Categories**
- PHMA
- GHMA
- OHMA



Sources: Esri, HERE, DeLorme, Intermap, increment P Corp., GEBCO, USGS, FAO, GeoBase, IGN, Kadaster NL, Ordnance Survey, Esri Japan, METI, Esri China (Hong Kong), Swisstopo, MapmyIndia, © OpenStreetMap contributors, and the GIS User Community



2017 Wildfires in GRSG Habitat

GRSG MGMT Category	Total Acres of Wildfire Reported*
PHMA	200,212
GHMA	236,989
OHMA	214,810
TOTAL	652,011**

** As of 7/25/2017.*

*** Approximately 71% of 2017 wildfire acreage in NV.*

Sources: NDF